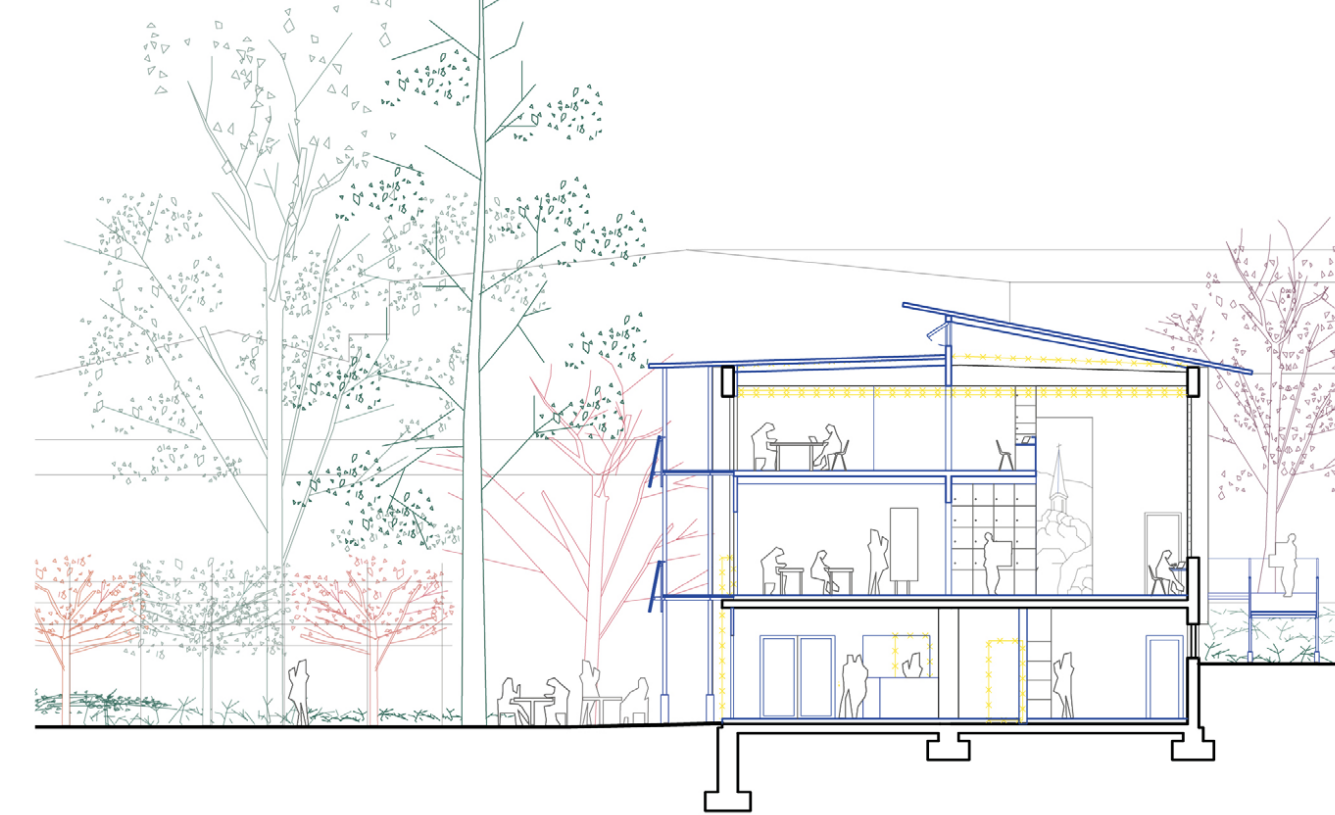


Throughout the year – between cottage garden, orchard meadow, and festival hall

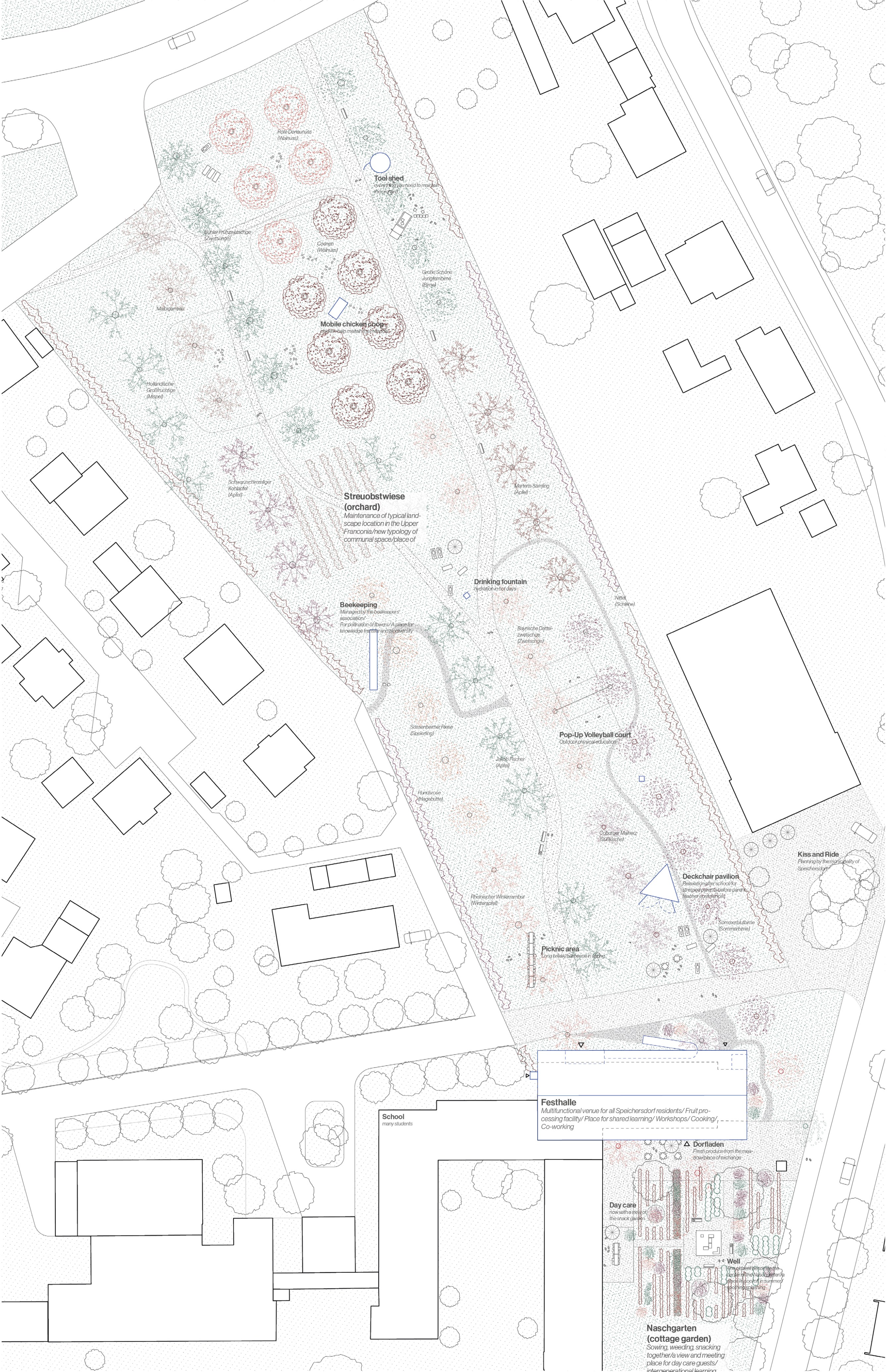
The use of the converted festival hall is shaped by the two adjacent landscape spaces. The festival hall responds to current social issues. As a place for working, harvesting, and cooking together, it becomes a unique meeting place in a dense landscape structure. In spring, theory courses on fruit tree cultivation and pruning are held in the hall. Afterwards, participants go out to the orchard to put what they have learned into practice. In September and October, the hall is full. Numerous events related to fruit harvesting and processing are on the program. Meanwhile, more and more fruit is being brought in through the gate via the ramp in the north. The basement offers ample space for storing walnuts and jams. The village store creates a communal sales network for local products.

Festhalle – a venue for clubs, co-working, movie nights

Beyond its function as a large toolbox for working on the orchard meadow, the hall offers ample space for the diverse needs of various groups of people in Speichersdorf: students find a place to do their homework at lunchtime, clubs find space for meetings and presentations in the evenings. Lockable lockers in front of the individual rooms enable high utilization and fluctuation of users. Public welfare-oriented and commercial use for presentations and external company meetings can alternate here. Comfortable and modern co-working spaces are being created on the first floor, which can be rented on a weekly or monthly basis and ensure basic financing for the hall.



section, M 1:200



site plan/ garden plan, M 1:500

Streuobstwiese

The large meadow to the north of the hall is being turned into an orchard. A variety of small spaces create high-quality recreational areas where people can relax after school or have a picnic on the weekend. The orchard meadow has a long tradition as a landscape feature in the Upper Franconia. At the same time, some Speichersdorf residents still engage in agriculture as a sideline. Various efforts are being made to promote knowledge about the preservation of the cultural landscape. We propose to take advantage of the unique location of the festival hall and reinterpret it as a place of intergenerational learning and working. Like no other place, a new typology of collaborative working can emerge here – for the local community of Speichersdorf, as well as regional companies. The orchard meadow thus becomes the counterpart to the open space of the “new center” – the latter as a place of shared relaxation, and the former as a place of shared working and learning.

Naschgarten

In the south, the cottage garden significantly enhances the entrance area of the hall. At the same time, it creates a place where visitors to the day care center and students in the after-school program can garden together and learn from each other. What is left over from snacking is sold in the village store along with the produce from the orchard. More than just a place for local food, the village shop serves as an informal meeting place. The small café seating in the partial shade of the south-facing balcony invites visitors to linger.

Implementation and Funding

The construction implementation is based on a phased implementation strategy that creates synergies between the existing building, the landscape, and energy generation and specifically addresses different sources of funding.

The first step involves the energy-efficient refurbishment of the aging roof, which will be equipped with a photovoltaic system capable of supplying not only the hall but also adjacent public buildings with electricity. This measure is eligible for funding through EU and state-level programs such as EFRE or the Bavarian Climate Protection Initiative. At the same time, a balcony, ramp, and elevator will be installed using prefabricated steel components – barrier-free, demountable, and quickly implementable.

Inside the building, a multifunctional spatial structure known as the “wooden shell” will be created using modular timber construction. It will be prefabricated, assembled within a few days, and allow for flexible use. In combination with the newly created edible garden and orchard meadow, an ensemble will emerge that opens up access to a variety of funding sources in rural development, environmental education, and social infrastructure – such as the Federal Rural Development Program (BULE+) or Bavarian landscape stewardship schemes.

In the long term, the operation of the building is economically secured: the co-working spaces on the upper floor will generate stable rental income, supplemented by revenue from the village shop, events, and project-based grants. The design focuses on durable, low-maintenance building structures and efficient operations – turning the hall into a functional and economic backbone of the village’s new community hub.

